

# POWEL SMART GRID PORTAL

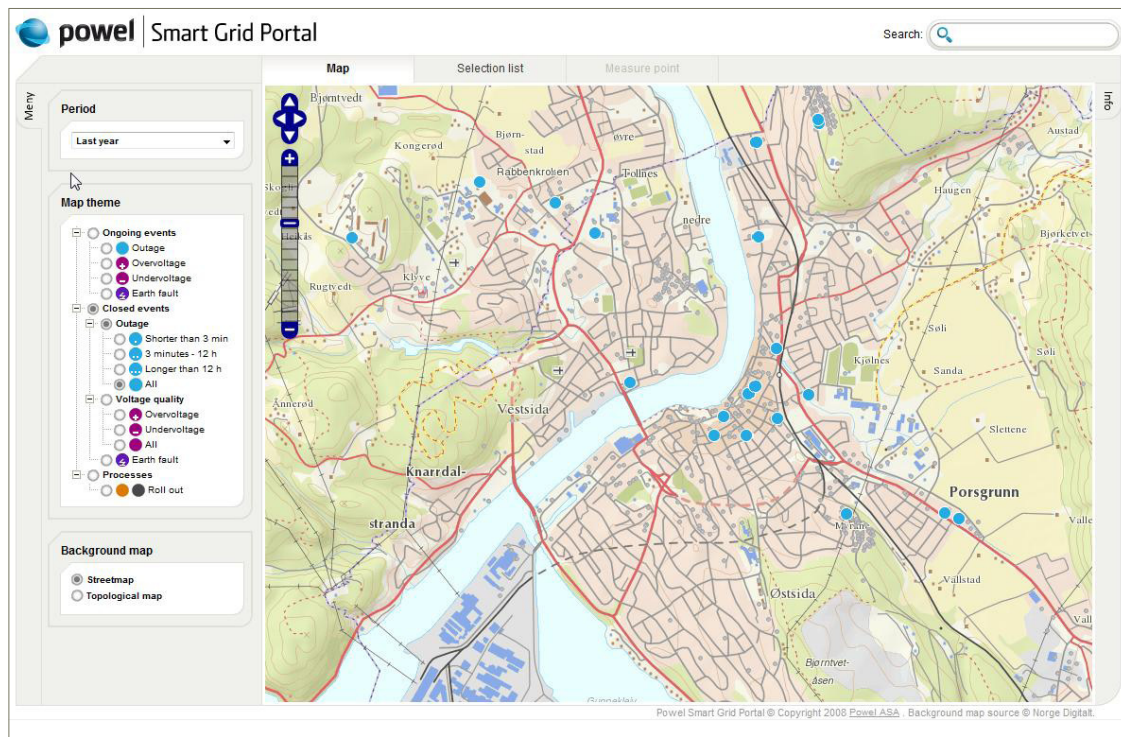
Smart energy meters are continually adding and improving functionalities and service capabilities. Real-time information about energy consumption, fraud detection, switching, outage information, on-demand meter reading, connect/disconnect and many other functions are common practice. This new functionality provides a unique opportunity to improve operational efficiency of the power grid whilst providing better customer service to power consumers. Powel Smart Grid Portal is the first open and map-based solution that exploits the benefits of intelligent metering.

## BRINGING VALUE TO YOUR CUSTOMERS

Leveraging the capabilities of smart meters, the Powel Smart Grid Portal is designed for energy utilities to exploit the new functionality and wealth of information available within energy meters, whilst still keeping control. The portal makes it possible to monitor and analyze various types of collected data and allows utilities to utilize and access all the information available from the meter. This gives them new opportunities to provide improved service levels to their customers and allows customer service representatives to see up-to-date information of consumption and an instant snapshot profile of

every customer that contacts them. With this information at their fingertips, customers will receive real-time information, proactive communications, and allow for service interruptions to be resolved more efficiently and quickly.

Powel MDMS with the Smart Grid Portal is designed to provide a secure and single interface for every kind of utility or service provider. Its advanced security features facilitate multiple users and ensure that only authorized individuals or user groups have access to meter data.



## SUPERVISION OVER YOUR INFRASTRUCTURE

The Powel Smart Grid Portal utilizes Powel MDMS functionality and modern web technology with state-of-the-art ergonomic principles making it powerful, intuitive and user friendly. An intuitive map-based interface allows the user to see outages, voltage quality and problem areas geographically. Seeing the information presented on a map allows for quick analysis and resolution by those managing the network and customer service.

The portal provides a real-time view based on the information provided by the smart meters. This allows for better and more proactive customer service, efficient maintenance planning and helps to optimize resource allocations.

Outages information and voltage quality can also be registered in meters in addition to other events. By using the business layer for filters, reports and calculations in Powel MDMS, the Powel Smart Grid Portal will monitor and report only the key events and alarms. This allows the utility to keep control even with large increases in events and system information. This capability with sophisticated filters and search criteria provide the outage and event information needed to effectively manage the meter infrastructure. As new meters are deployed, the Smart Grid Portal will provide a valuable oversight of the progress in selected areas. A powerful search engine and visual tools allow you to keep track of all your rollout programs.

The utility greatly benefits from the visual presentation of information. Power consumers get fast and accurate answers to their questions related to their services as customer service representative can get a complete picture of that customer instantly.

## IMPROVING RESOURCE UTILIZATION

Both utilities and service providers can realize better control and cost savings. Making the information available in a usable way allows for better planning, faster fault resolution and fewer manual tasks.

The Smart Grid Portal supports remote service and control functionality like remote disconnection of a meter. This greatly improves resource utilization by enabling remote meter management. What might have taken a few man hours previously can now be achieved with a click of a button.

## SYSTEM BENEFITS

The Smart Grid Portal is a solution that utilizes:

- information from multiple meters vendors
- map-based interface
- consumption and events available within smart meters
- a single interface for multiple utilities
- the flexibility of the business layer in Powel MDMS
- simple integration capabilities to third party systems (GIS/SCADA)

## KEY FEATURES

### Powel Smart Grid Portal key functionalities:

- Multi-vendor meter management
- Map-based user interface
- Web client
- Meter status visualization
- Drill down views

### Metered consumption reporting

- Event logging
- Categorization
- Search capabilities
- Remote connect/disconnect
- Customer information
- Alarms
- Deployment progress mapping

